



## DINING TABLE KATA



The table model Kata – suitable for both indoor and outdoor use – features a black powder-coated steel frame with a classic straight toe foot, which can be combined with various tabletops. It is available in dining table height, with FLAT technology or adjustable floor gliders, and can additionally be equipped with a tilting mechanism for space-saving storage. The hydraulically mounted floor gliders of the FLAT system automatically adapt perfectly to uneven floors, meaning you can say goodbye to wobbly tables for good! The patented system immediately responds to the surface when the table is placed, ensuring a stable stand.

- Highly weather-resistant and easy to maintain due to powder coating
- Robust and stable thanks to the steel frame
- Wobble-free thanks to flexible floor leveling systems

**€218.00**

## DINING TABLE KATA

## Your chosen variant

### Product details

Product Code: 101MZ8

Tabletop width: 68 cm

Model name: Kata

Product type: dining table

Frame material: steel

Frame colour: black powder-coated

Foot type: 4-foot

Floor glider: adjustable

Assembly state: not assembled

Tabletop depth: 68 cm

Tabletop material: Compact Slim (High Pressure Laminate (HPL))

Tabletop colour: Ferro black

Edge thickness: 12 mm

Table top thickness: 12 mm

Fixing top: standard

Table base size: central single column

# DINING TABLE KATA

## Your chosen variant

### Technical specifications

Product Code: 101MZ8

Model name: Kata

Product type: dining table

Application area: outdoors

Height: 74.2 cm

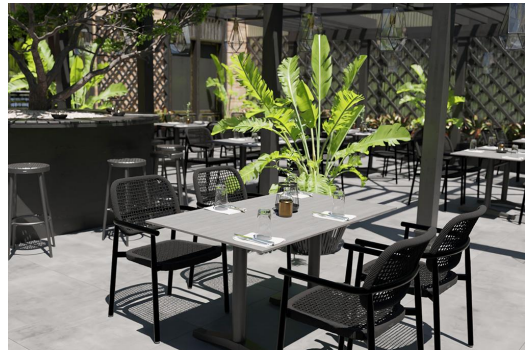
Width: 68 cm

Depth: 68 cm

Weight: 25.1 kg

Tabletop width: 68 cm

# DINING TABLE KATA



# DINING TABLE KATA